

Double Leaf T30 (EI₂ 30-SaC5) Fire Retardant Steel Door or Steel Hatch

Fire Protection T30 (EI₂ 30-SaC5) tested acc. to EN 1634-1

Optional Audited Additional Functions

- Smoke Control	RS	tested acc. to DIN 1634-3
- Sound Insulation	up to 42 dB	tested acc. to EN ISO 10140-2
- Burglar Protection	RC1/RC2/RC3/RC4	tested acc. to EN 1627
- Fan Light, Top Panel, Side Panels		
- Stainless Steel		

Range of Dimension

Width from 1375 mm to 4250 mm
Height from 1750 mm to 4250 mm
(with fan light or top panel up to height of max. 3500 mm)
(with side panels up to element width of max. 4500 mm)

Technical Specification and Tender Text

Product:	T30-2 (EI ₂ 30-SaC5) double leaf fire retardant steel door brand Buchele tested acc. to EN 1634-1	
Door Type:	TSN-2 (system Schroeders)	
Structural Opening:	... x ... mm	
Door Leaf:	69 mm thick, three sides rebated, thin- or thick rebate securing pin	
Threshold:	Separation sill, surface galvanized	
Frame:	3-sided corner frame with sealing profile in rebate	
Hinges:	Three-part construction hinges with ball bearing spacer ring	
Door Closer:	2 pieces door closer system with standard arm (from structural opening $\geq 3000 \times 3250$ mm with tandem door closer) 1 piece door closer	
Fitting:	Mortise lock with latch lever function (prepared for installation of a profile cylinder lock, provided by customer). Door handle set fixed pivoted synthetic material black in U-shape with rounded short-plate. Passive leaf with concealed shoot bolt lock.	
Surface:	Door leaf and frame galvanized und primed with primer similar RAL 7035.	
Assembly:	Delivery and professional assembly including filling of the frame with mortar of group III.	
Installation:	masonry	≥ 115 mm (as of 2510×2510 mm ≥ 240 mm)
	concrete	≥ 100 mm (as of 2510×2510 mm ≥ 140 mm)
	areated concrete	≥ 150 mm (as of 2510×2510 mm ≥ 240 mm)
	mounting wall F90	≥ 100 mm (up to max. 2500×2500 mm)

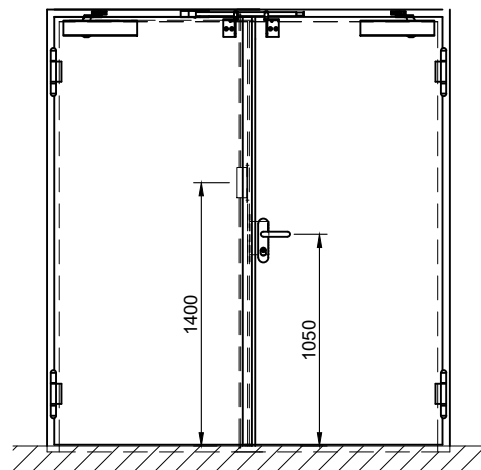
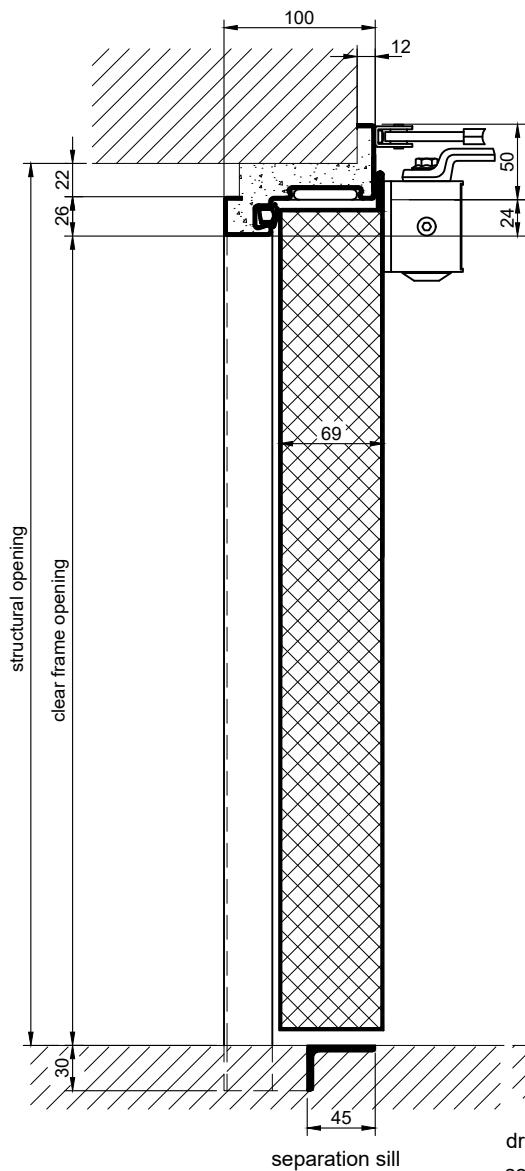
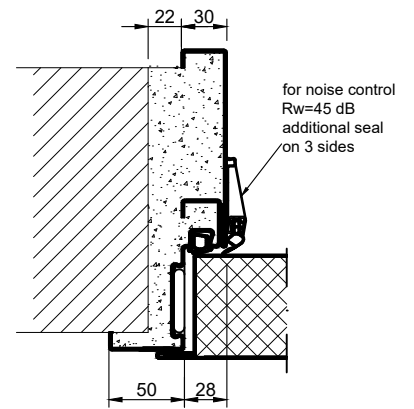
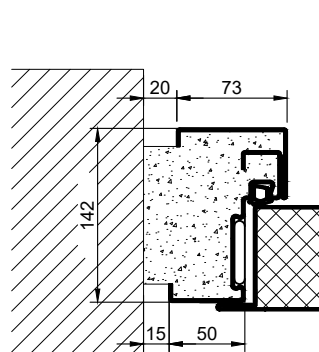
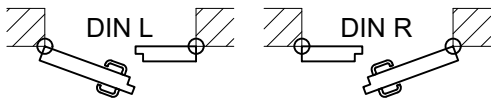
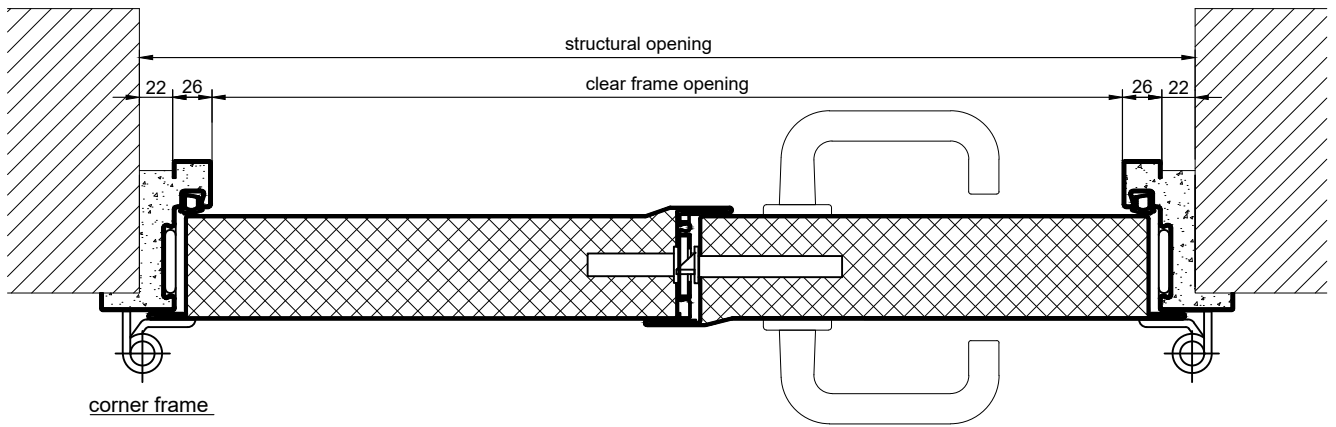
Supplementary Equipment

Glazing:

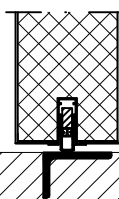
F30 fire-protective glazing fixed with steel glazing bars.
Minimum border 90 mm circumferential,
max. size of glass 940 x 2195 mm.

Stainless Steel:

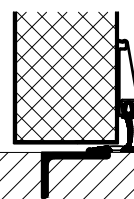
Material 1.4301 (V2A) or. 1.4404 (V4A),
Surface mill finish or brushed.



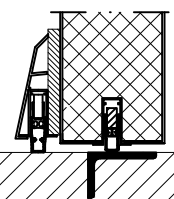
threshold variants (more on request):



drop seal
sound insulation $R_w = 35$ dB



tow seal
sound insulation $R_w = 39$ dB



sound insulation $R_w = 43$ dB